

ONK A cat – 2021
August 27th, August 28th and August 29th 2021
Hellecat

SAILING INSTRUCTIONS (SIs)

The notation '[NP]' in a rule of the sailing instructions (SIs) means that a boat may not protest another boat for breaking that rule. This changes RRS 60.1(a).

1 RULES

1.1 The event is governed by the rules as defined in *The Racing Rules of Sailing*.

2 CHANGES TO SAILING INSTRUCTIONS

2.1 Any change to the sailing instructions will be posted before 0900 on the day it will take effect, except that any change to the schedule of races will be posted by 2000 on the day before it will take effect.

3 COMMUNICATIONS WITH COMPETITORS

3.1 The online official notice board is located at www.hellecat.nl and at the club house.

3.2 The race office is located at *Duinweg 11, Hellevoetsluis*, email wedstrijd@hellecat.nl.

3.5 [DP] From the first warning signal until the end of the last race of the day, except in an emergency, a boat shall not make voice or data transmissions and shall not receive voice or data communication that is not available to all boats.

4 CODE OF CONDUCT

4.1 [DP] Competitors and support persons shall comply with reasonable requests from race officials.

5 SIGNALS MADE ASHORE

5.1 Signals made ashore will be displayed at *clubhouse Hellecat*.

5.2 When flag AP is displayed ashore, '1 minute' is replaced with 'not less than 30 minutes' in Race Signals AP.

6 SCHEDULE OF RACES

6.1

	Opening & skippers briefing	Warning signal first race
August 27 th	11:00 hr	11:55 hr
August 28 th		10:55 hr
August 29 th		10:55 hr

6.2 One extra race per day may be sailed, provided that no class becomes more than one race ahead of schedule and the change is made according to SI 2.1.

6.3 To alert boats that a race or sequence of races will begin soon, the orange starting line flag will be displayed with one sound at least five minutes before a warning signal is made.

6.5 On the last scheduled day of racing no warning signal will be made after *15:30 hr*

7 CLASS FLAGS

7.1 The Class flag is the clue A-cat Flag

8 RACING AREA

8.1 SI Addendum A shows the location of the racing area(s).

9 COURSES

9.1 The diagram(s) in SI Addendum B show the course, including the approximate angles between legs, the order in which marks are to be passed, and the side on which each mark is to be left.

9.2 The Course will be LA

9.3 Courses will not be shortened. This changes RRS 32.

9.4 Legs of the course will not be changed after the preparatory signal. This changes RRS 33.

9.5 The number of laps will be showed, by flagging a pennant flag on the starting vessel.

10 MARKS

10.1 Marks are orange

11 spare

12 THE START

12.1 Races will be started using RRS 26 with the warning signal made at least 5 minutes before the starting signal.

12.2 The starting line is between a staff displaying an orange flag on the starting vessel at the starboard end and the course side of the port-end starting mark.

12.4 Boats whose warning signal has not been made shall avoid the starting area during the starting sequence for other races.

12.5 A boat that does not start within 4 minutes after her starting signal will be scored Did Not Start without a hearing. This changes RRS A5.1 and A5.2.

13 spare

14 THE FINISH

14.1 The finishing line is between a staff displaying a blue flag on the finishing mark at the starboard end and the course side of the port end finishing mark.

15 PENALTY SYSTEM

15.1 The Scoring Penalty, RRS 44.3, applies.

15.2 RRS 44.1 is changed so that the Two-Turns Penalty is replaced by the One-Turn Penalty.

16 TIME LIMITS [AND TARGET TIMES]

16.1 The Mark 1 Time Limit, Race Time Limit (see RRS 35), and the Finishing Window are shown in the table below.

Mark 1 Time Limit	Race Time Limit	Finishing Window
<i>15</i>	<i>40</i>	<i>20</i>

16.2 If no boat has passed the first mark within the Mark 1 Time Limit, the race will be abandoned.

16.3 The Finishing Window is the time for boats to finish after the first boat sails the course and finishes. Boats failing to finish within the Finishing Window, and not subsequently retiring, penalized or given redress, will be scored Time Limit Expired (TLE) without a hearing. A boat scored TLE shall be scored points for the finishing place 1 more than the points scored by the last boat that finished within the Finishing Window. This changes RRS 35, A5.1, A5.2 and A10.

16.4 Failure to meet the Target Time will not be grounds for redress. This changes RRS 62.1(a).

17 HEARING REQUESTS

17.1 The protest time limit is 60 minutes after the last boat finishes the last race of the day or the race committee signals no more racing today, whichever is later. The time will be posted on the official notice board.

17.2 Hearing request forms are available from the race office.

17.3 Notices will be posted no later than 30 minutes after the protest time limit to inform competitors of hearings in which they are parties or named as witnesses. Hearings will be held in the protest room, located at *clubhouse Hellecat*, beginning at the time posted.

18 SCORING

18.1 The scoring system is as follows:

18.2 4 races are required to be completed to constitute a series.

18.3 A boat's series score is the total of her race scores excluding her worst scores.

18.4 (a) When fewer than 5 races have been completed, a boat's series score is the total of her race scores.

(b) When from 6 to 11 races have been completed, a boat's series score is the total of her race scores excluding her worst score.

(c) When 12 or more races have been completed, a boat's series score is the total of her race scores excluding her two worst scores.

18.5 Rule A5.3 applies.

19 SAFETY REGULATIONS

19.1 [DP] A boat that retires from a race shall notify the race committee at the first reasonable opportunity.

20 REPLACEMENT OF EQUIPMENT

20.11 [DP] Substitution of damaged or lost equipment is not allowed unless authorized in writing by the *race committee*. Requests for substitution shall be made to the committee at the first reasonable opportunity, which may be after the race.

21 EQUIPMENT AND MEASUREMENT CHECKS

21.1 A boat or equipment may be inspected at any time for compliance with the class rules, notice of race and sailing instructions.

21.2 [DP] When instructed by a race official on the water, a boat shall proceed to a designated area for inspection.

22 spare

23 OFFICIAL VESSELS

23.1 Official vessels will be identified as follows: *blue flag "hellecat"*

24 [DP] SUPPORT TEAMS

24.1 Team leaders, coaches and other support persons shall stay outside areas where boats are racing from the time of the preparatory signal for the first start until all boats have finished or retired or the race committee signals a postponement, general recall or abandonment.

25 TRASH DISPOSAL

25.1 Trash may be placed aboard official [or support person] vessels.

Addendum A



Addendum B

COURSE RACING Course LA

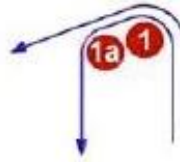
L



Course: Windward/Leeward

Signal	Marking Rounding Order
L2	Start - 1 - 4s/4p - 1 - Finish
L3	Start - 1 - 4s/4p - 1 - 4s/4p - 1 - Finish
L4	Start - 1 - 4s/4p - 1 - 4s/4p - 1 - 4s/4p - 1 - Finish

IA



Course: Same As Course I Except With Offset Mark 1A

Signal	Marking Rounding Order
IA2	Start - 1 - 1a - 4s/4p - 1 - 1a - 2 - 3p - Finish
IA3	Start - 1 - 1a - 4s/4p - 1 - 1a - 4s/4p - 1 - 1a - 2 - 3p - Finish
IA4	Start - 1 - 1a - 4s/4p - 1 - 1a - 4s/4p - 1 - 1a - 4s/4p - 1 - 1a - 2 - 3p - Finish

LA



Course: Same As Course L Except With Offset Mark 1A

Signal	Marking Rounding Order
LA2	Start - 1 - 1a - 4s/4p - 1 - 1a - Finish
LA3	Start - 1 - 1a - 4s/4p - 1 - 1a - 4s/4p - 1 - 1a - Finish
LA4	Start - 1 - 1a - 4s/4p - 1 - 1a - 4s/4p - 1 - 1a - 4s/4p - 1 - 1a - Finish