

## SAILING INSTRUCTIONS Class Event May A-Cat & Class Event F16

Organized by Catamaran Vereniging Hellecat  
from Saturday May 13<sup>th</sup> until Sunday May 14<sup>th</sup>, 2023  
location: Haringvliet, the Netherlands

---

The notation '[NP]' in a rule means that a boat may not protest another boat for breaking that rule. This changes RRS 60.1(a).

### 1. RULES

- 1.1\* The event is governed by the rules as defined in *The Racing Rules of Sailing (RRS)*.
- 1.2 A-cat class rules will apply
- 1.3 The following sailing instructions contain changes to the Racing rules:  
SI 4.2; 4.3; 14.1; 15.3; 16.7; 16.8; 16.9; 24.
- 1.4 All competitors and support persons must adhere to the corona rules of the Dutch government. For the for the rules see <https://www.government.nl/topics/coronavirus-covid-19>.
- 1.5 [DP] Competitors and support persons shall comply with any reasonable request from an event official. Failure to comply may be misconduct. - Reasonable actions by event officials to implement COVID-19 guidance, protocols or legislation, even if they later prove to have been unnecessary, are not improper actions or omissions.

### 2\* CHANGES TO SAILING INSTRUCTIONS

- 2.1 When any SI is changed, an updated version of it will be posted on the Official Notice Board (offline and online) as part of these sailing instructions. This will be done not later than 24 hours before the first warning signal.

### 3 COMMUNICATIONS WITH COMPETITORS


- 3.1 Notices to competitors will be posted on the official notice board located at Manage2Sail
- 3.2 The race office is located at *Hellecat clubhouse, Duinweg 11B Hellevoetsluis*  
[wedstrijdcommissie@hellecat.nl](mailto:wedstrijdcommissie@hellecat.nl)
- 3.3 A boat shall neither make radio transmissions while racing nor receive radio communications not available to all boats. This restriction also applies to mobile telephones.

### 4 [DP] CODE OF CONDUCT

- 4.1 Competitors and support persons shall comply with reasonable requests from race officials.
- 4.2 Competitors and support persons shall [handle any equipment][or][place advertising provided] by the organizing authority with care, seamanship, in accordance with any instructions for its use and without interfering with its functionality.

### 5 SIGNALS MADE ASHORE

- 5.1 Signals made ashore will be displayed at the flagpole located near the catamaran vereniging Hellecat.

- 5.2 When flag AP  is displayed ashore, '1 minute' is replaced with 'not less than 30 minutes' in the race signal AP.
- 5.3 Flag Y will not be displayed, RRS 40.1 applies at all times while afloat. This changes the Part 4 preamble and RRS 40.1.

## 6 SCHEDULE OF RACES

### 6.1

| Date                      | <class>       | First start signal |
|---------------------------|---------------|--------------------|
| Saturday 13 <sup>th</sup> | A-Class & F16 | 11:55              |
| Sunday 14 <sup>th</sup>   | A-Class & F16 | 10:55              |

Number of races for A-Class and F16 is 8, races scheduled per day is 4, with a maximum of 5 races per day.

- 6.2 One extra race per day may be sailed, provided that no class becomes more than one race ahead of schedule and the change is made according to SI 2.1.
- 6.3 The scheduled time of the warning signal for the first racing day is 11:55
- 6.4 To alert boats that a race or sequence of races will begin soon, the orange starting line flag will be displayed with one sound at least five minutes before a warning signal is made.
- 6.5 On the last scheduled day of racing no warning signal will be made after 15:30

## 7\* CLASS FLAGS

- 7.1 For A-Cat, Class flag will be the blue A-cat Flag.
- 7.2 For F16, Class flag will be the D flag.

## 8 RACING AREA

- 8.1 Attachment A shows the location of the racing area.

## 9 COURSES

- 9.1\* The diagram(s) in SI Addendum A show(s) the courses, including the approximate angles between legs, the order in which marks are to be passed, and the side on which each mark is to be left.
- 9.2 The "LA" course will be as displaced in attachment B.
- 9.2 The number of laps will be shown, by flagging a number flag on the starting vessel.

## 10 MARKS


- 10.1\* Marks 1, 2, 3, 4S and 4P will be will be coloured cylinders.
- 10.2\* The starting and finishing marks will be floating buoy
- 10.3 A race committee vessel signaling a change of a leg of the course is a mark as provided in SI 13.2.

## 11 OBSTRUCTIONS

Not applicable

## 12 THE START

- 12.1 Races will be started by using RRS 26 with the warning signal given five (5) minutes before the starting signal.

**12.2.1** The starting line will be between displaying an orange flag  on the starting vessel at starboard- end and the port-end starting mark.

**12.3** Boats whose warning signal has not been made shall avoid the starting area during the starting sequence for other races.


**12.5** A boat that does not start within 4 minutes after her starting signal will be scored Did Not Start without a hearing. This changes RRS A5.1 and A5.2.

### **13 CHANGE OF THE NEXT LEG OF THE COURSE**

**13.1** To change the next leg of the course, the race committee will lay a new mark or move the finishing line and remove the original mark as soon as practicable. When in a subsequent change a new mark is replaced, it will be replaced by an original mark

**13.2** Except at a gate, boats shall pass between the race committee vessel signalling the change of the next leg and the nearby mark, leaving the mark to port and the race committee vessel to starboard. This changes RRS 28.

### **14\* THE FINISH**

**14.1** The finishing line will be between a buoy displaying a blue flag  on the race Committee vessel and the course side of the finishing mark.

### **15 PENALTY SYSTEM**

**15.1** RRS 44.1 is changed, so that the Two-Turns Penalty is replaced by the One-Turn Penalty, including a gybe and a tack.

### **16 TIME LIMITS [AND TARGET TIMES]**

**16.1** The Mark 1 Time Limit, Race Time Limit (see RRS 35), and the Finishing Window are shown in the table below.

| Class | Time Limit | Mark 1 Time Limit | Finish Window | Target time |
|-------|------------|-------------------|---------------|-------------|
| A-Cat | 75 min.    | 30 min.           | 30 min.       | 40 min.     |
| F16   | 75 min.    | 30 min.           | 30 min.       | 41 min.     |

**16.2** If no boat has passed Mark 1 within the Mark 1 time limit the race will be abandoned. Failure to meet the target time will not be grounds for redress. This changes RRS 62.1(a).

**16.3** he Finishing Window is the time for boats to finish after the first boat sails the course and finishes. Boats failing to finish within the Finishing Window, and not subsequently retiring, penalized or given redress, will be scored Time Limit Expired (TLE) without a hearing. A boat scored TLE shall be scored points for the finishing place one more than the points scored by the last boat that finished within the Finishing Window. This changes RRS 35, A5.1, A5.2 and A10.

**16.4** Failure to meet the target time will not be grounds for redress. This changes RRS 62.1(a).

### **17 HEARING REQUESTS**


**17.1** For each class, the protest time limit is 60 minutes after the last boat [in that class] finishes the last race of the day or the race committee signals no more racing today, whichever is later. The time will be posted on the official notice board.

- 17.2** Hearing request forms are available from the race office at Clubhouse Hellecat.
- 17.3** Notices will be posted within 30 minutes of the protest time limit to inform competitors of hearings in which they are parties or named as witnesses. Hearings will be held in the protest room, located in the club building beginning at the time posted. Hearings may be scheduled to begin up to 30 minutes before the end of protest time.
- 17.4** Notices of protests by the race committee or protest committee will be posted to inform boats under RRS 61.1(b).
- 17.5** A list of boats that have been penalised under Appendix P for breaking RRS 42 will be posted.
- 17.6** [DP], are at the discretion of the protest committee. A boat may accept a discretionary penalty before a hearing concerning the same incident by completing a form available at the jury office.
- 17.7** Breaches of rules in the SI marked [NP] will not be grounds for a protest by a boat. This changes RRS 60.1(a).
- 17.8** Penalties for breaches of rules in the SI marked [NP] will be disqualification by the race committee without hearing, this changes RRS 63.1 and A5.
- 17.9** On the last scheduled day of racing, a request for reopening a hearing shall be delivered Within the protest time limit if the requesting party was informed of the decision on the previous day;
- 17.10** No later than 30 minutes after the requesting party was informed of the decision on that day; This changes RRS 66.

## **18 SCORING**

- 18.01** The Low point system shall apply to all races.
- 18.02** A boat's score shall be calculated in accordance with RRS A2.
- 18.03** Eight (8) races are scheduled, of which four (4) races are required to be completed to constitute a valid event and series.
- (a) When fewer than 5 races have been completed, a boat's series score will be the total of her race scores.
- (b) When from 6 to 11 races have been completed, a boat's series score will be the total of her race scores excluding her worst score.

## **19 [NP][DP] SAFETY REGULATIONS**

- 19.01** The race committee will protest a boat for a breach of these safety regulations.
- 19.02** Competitors shall wear personal flotation devices at all times while afloat, except briefly while changing or adjusting clothing or personal equipment. Flag Y  will not be displayed, RRS 40.1 applies at all times when afloat. This changes Part 4 preamble and RRS 40.1.
- 19.03** Competitors shall wear dry suit or wetsuit and at least one (1) flare, at all times while afloat, except briefly while changing or adjusting clothing or personal equipment. When not wearing / available at inspection, the race committee can give a DSQ for one race during the day of inspection.
- 19.04** All competitors sailing on a "full foiling" catamaran shall be helmed and impact vest at **all times** while afloat.
- 19.05** Boats not leaving the beach for a scheduled race shall promptly notify the Race Office.
- 19.06** A boat that retires from racing shall notify the race committee before leaving the racing area, or if that is not possible, shall notify the race office as soon as possible after returning ashore.
- 19.07** Boats in distress: A boat, capsized or otherwise in distress, has to ask for help, if necessary. However committee or rescue boats will take their responsibility and assist if a boat is unable to race again within 10 minutes time, or they will help earlier for safety reasons. If a committee or rescue boats decides to assist a boat, capsized or otherwise in distress, such a boat will not be disqualified. This changes RRS 63.1.
- 19.08** Boats retiring from racing shall complete a retirement declaration form at the race office before the protest time limit.
- 19.09** Boats not racing shall remain clear of boats that are racing and official boats.

## **20 REPLACEMENT OF CREW OR EQUIPMENT**

- 20.1** Substitution of marked damaged or lost equipment will not be allowed unless approved by the race committee. Requests for substitution shall be made to the committee at the first reasonable opportunity, which may be after the race.

## **21 EQUIPMENT CHECKS AND MEASUREMENT CHECKS**

- 21.1** A boat or equipment may be inspected at any time for compliance with the class rules, notice of race and sailing instructions.
- 21.2** [DP] When instructed by a race official on the water, a boat shall proceed to a designated area for inspection.

## **22 SUPPLIED BOATS**

**Not applicable**

## **23 OFFICIAL VESSELS**

- 23.1** Official vessels will be identified as follows: a small white flag with the Hellecat logo.

## **24 [DP] SUPPORT TEAMS**

- 24.1** Team leaders, coaches and other support persons shall stay outside areas where boats are racing from the time of the preparatory signal for the first start until all boats have finished or retired or the race committee signals a postponement, general recall or abandonment.

## **25 TRASH DISPOSAL**

- 25.1** Trash may be placed aboard official or support persons boats.

## **26 ORGANISATION**

The race officer is : Marcol de Klerk

## **27 PRIZES**

A-Cat first 3 foiling  
A-Cat first 3 classic  
F16 first 3 overall

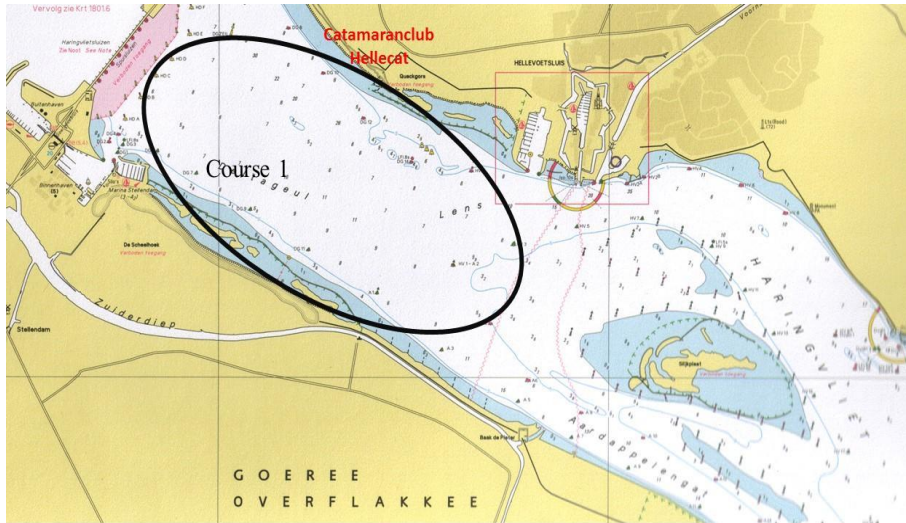
## **28 DISCLAIMER OF LIABILITY**

Competitors participate in the regatta entirely at their own risk. See RRS 4, Decision to Race. The organising authority will not accept any liability for material damage or personal injury or death sustained in conjunction with or prior to, during, or after the regatta.

## **29 INSURANCE**

Each participating boat shall be insured with valid third-party liability insurance with a minimum cover of Euro 1.000.000 per event or the equivalent.

**ADDENDUM A**



**ILLUSTRATING THE COURSE**

Shown here are diagrams of course shapes. Any course can be similarly shown. When there is more than one course, prepare a separate diagram for each course and state how each will be signalled.

**L**

**Course: Windward/Leeward**

| Signal | Marking Rounding Order                                 |
|--------|--|
| L2     | Start - 1 - 4s/4p - 1 - Finish                         |
| L3     | Start - 1 - 4s/4p - 1 - 4s/4p - 1 - Finish             |
| L4     | Start - 1 - 4s/4p - 1 - 4s/4p - 1 - 4s/4p - 1 - Finish |

**IA**

**Course: Same As Course I Except With Offset Mark 1A**

| Signal | Marking Rounding Order  |
|--------|---|
| IA2    | Start - 1 - 1a - 4s/4p - 1 - 1a - 2 - 3p - Finish                                   |
| IA3    | Start - 1 - 1a - 4s/4p - 1 - 1a - 4s/4p - 1 - 1a - 2 - 3p - Finish                  |
| IA4    | Start - 1 - 1a - 4s/4p - 1 - 1a - 4s/4p - 1 - 1a - 4s/4p - 1 - 1a - 2 - 3p - Finish |

**LA**

**Course: Same As Course L Except With Offset Mark 1A**

| Signal | Marking Rounding Order   |
|--------|--|
| LA2    | Start - 1 - 1a - 4s/4p - 1 - 1a - Finish                                   |
| LA3    | Start - 1 - 1a - 4s/4p - 1 - 1a - 4s/4p - 1 - 1a - Finish                  |
| LA4    | Start - 1 - 1a - 4s/4p - 1 - 1a - 4s/4p - 1 - 1a - 4s/4p - 1 - 1a - Finish |